

Rinsing spray set - Chrome

LOT

27 722 970



- with angular rosette
- spray flow
- automatic spout/shower diverter
- height of mixer 189 mm
- hole diameter rinsing spray 32mm
- fabric braided hose 1500 mm
- sprayface with anti-scaling system
- lead-free

Can only be combined with 32800680, 32843680.

Intrinsic protection against back flow.

Button has to be pressed while using.

| | | |
|--|-------------------------------|---------------|
|  | Chrome | 27 722 970-00 |
|  | Brushed Platinum | 27 722 970-06 |
|  | Platinum | 27 722 970-08 |
|  | Durabross (23kt Gold) | 27 722 970-09 |
|  | Dark Chrome | 27 722 970-19 |
|  | Brushed Durabross (23kt Gold) | 27 722 970-28 |
|  | Brushed Champagne (22kt Gold) | 27 722 970-46 |
|  | Champagne (22kt Gold) | 27 722 970-47 |
|  | Brushed Chrome | 27 722 970-93 |
|  | Brushed Dark Platinum | 27 722 970-99 |

27 722 970

mm [inches]



Flow rate chart



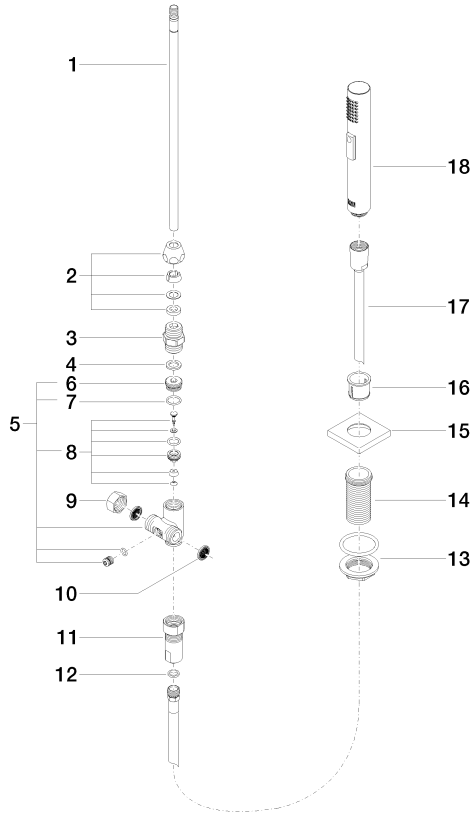
Certificates

Belgaqua_21-027- 27_3. IAPMO_N-4976 (2). LGA_29572. IAPMO_6397. LGA_38645.

Rinsing spray set - Chrome

27 722 970

Parts for other finishes can be found here: Brushed Platinum



Spare parts list

| No. | Item Number | Name | Quantity used | Delivery time |
|-----|--------------------|--------------------|---------------|---------------|
| 1 | 04 24 02 046 01-07 | pipe | 1 | 10 |
| 2 | 90 23 30 040 00-00 | threaded connector | 1 | 10 |
| 3 | 90 24 03 168 00 90 | nipple | 1 | 2 |
| 4 | 90 14 20 002 00 90 | seal | 1 | 2 |
| 5 | 90 17 09 046 10 90 | diverter | 1 | 2 |
| 6 | 09 24 04 112 10 90 | nipple | 1 | 2 |
| 7 | 90 14 10 033 00 90 | seal | 1 | 2 |
| 8 | 90 21 10 031 10 90 | diverter | 1 | 2 |
| 9 | 04 21 02 006 00 92 | cap | 1 | 2 |
| 10 | 09 23 01 039 90 | sieve | 2 | 2 |
| 11 | 90 24 03 241 00 90 | nipple | 1 | 2 |
| 12 | 90 14 20 019 00 90 | seal | 1 | 2 |
| 13 | 04 23 10 032 46 90 | fixing set | 1 | 2 |
| 14 | 09 30 01 090-07 | sleeve | 1 | 30 |
| 16 | 90 18 40 085 00 90 | sleeve | 1 | 2 |
| 17 | 90 30 02 062 00-00 | hose | 1 | 2 |
| 18 | 04 12 11 158 00-00 | shower | 1 | 10 |